



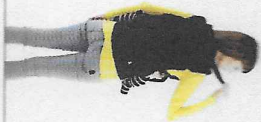
4.1 Attach hood with three snaps on front of carrier.



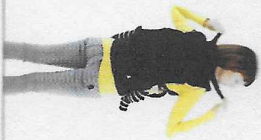
4.2 Snap each upper end of hood onto shoulder straps.



4.3 Attach hood with three snaps on front of carrier before wearing carrier on your back.



4.4 Reach back for one of the hood ends and bring the hood up over your baby's head. Reach for other hood end and snap each onto shoulder straps.



4.5 Attach bag with three lower snaps on front of carrier.



4.6 Toy ring is located on right shoulder strap.



4.7 Expandable pocket is located on waist belt.

